

Cardbox 3.0 Home Edition



CARDBOX FOR WINDOWS

Cardbox is a database. It stores information and indexes it for fast retrieval. You can search your records on any combination of criteria and view or print them in any format you want. You can create summary reports, mailing labels and standard letters.

SIMPLE

Imagine a card index.

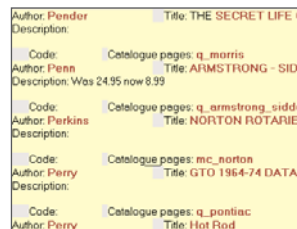
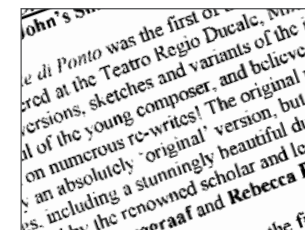
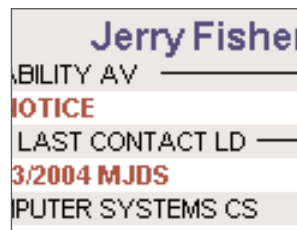
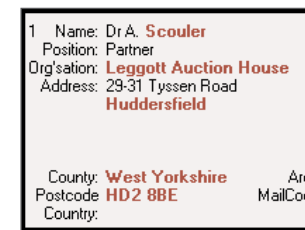
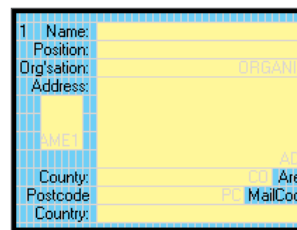
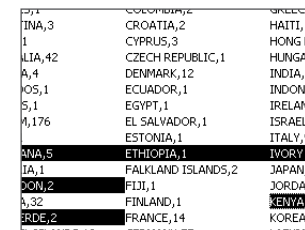
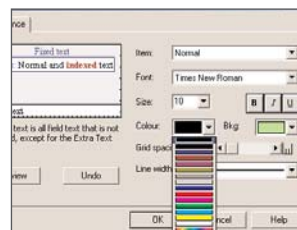
Then imagine a card index with no limit to the amount of text you can have, plus photographs and scanned documents.

Imagine that you can search on any word, number or date, anywhere on the card, in any combination - and you are beginning to imagine Cardbox.

POWERFUL

Cardbox is straightforward but it is far from trivial. Many of the applications you thought you needed a relational database for can be done easily with Cardbox.

- Size of each field: No built-in limit.
- Fields per record: 4,096.
- Images per record: No built-in limit.
- Size of each record: No built-in limit.
- Records per database: 10,000 (Home Edition)
16,000,000 (Professional Edition)
- Number of databases: Unlimited.
- Maximum database size: 1,000 GB.
- Number of index terms: Unlimited.
- Complexity of searches: Unlimited.
- Data import formats: CSV, ODBC, OLEDB.
- Data export formats: CSV, XML, or user-defined.
- Simple data interchange with Microsoft Office and mail-merging with Microsoft Word.



Live indexing in any field
 You can tell Cardbox to index every word in a field. You can also turn indexing on and off for particular words, with a single keystroke or mouse click.

Click here to see the image at its full size, in a window of its own.

Image handling
 Images can come from files, scanners, or cameras. They can be photographs, drawings, or documents. They can be any size: A4 documents are no problem. You can store any number of images in each record.

Intelligent indexing
 No need to define fields as "Date" or "Numeric". Cardbox recognises numbers and dates and indexes them appropriately.

Built-in spelling checker

Unlimited text in any field
 Any field can contain any amount of text, from a single character to many pages. If there is more text than will fit in the space on the screen, you can scroll it to view the rest.

Configurable menu bar

Intuitive icons and instant help make the toolbar easy to use

Any number of lines in a field

Automatic hyperlinks to web and email addresses

Drop-down lists and check boxes for easier input (radio buttons also available)

Step-by-step searching
 In Cardbox, you can build up complex searches one step at a time, so you can always see where you are. At each stage you can see the commands you have entered and the records you have found.

Select...
 Select also...
 Exclude...
 Exclude also...
 Include...
 Undo one level
 Clear all selections
 History of selections

Level 0: 13422 records selected
 Select TYPE/BAE
 Level 1: 487 records selected
 Select TYPE\300
 Level 2: 89 records selected
 Select MODEL\146
 Level 3: 23 records selected
 Exclude RK/AIR
 Level 4: 17 records selected

Browse bar for quick access to selected records

Image browse bar

Open as many databases as you like
 You can open several databases at the same time and switch between them or view them all together. If you are working on many projects, you can give each one a "workspace" of its own, with its own collection of databases.

